



SKILLS DEVELOPMENT 2021/2022



RESEARCH ACADEMY LEIPZIG

THE CENTRAL SERVICE INSTITUTION AT LEIPZIG UNIVERSITY DEDICATED TO SUPPORTING EARLY CAREER RESEARCHERS

We offer doctoral researchers and early postdocs (maximum four years after the doctorate) a wide range of support and services. The support we provide is intended to complement the offerings available in the faculties of Leipzig University. We are committed to ensuring uniform standards and quality assurance for doctoral studies at Leipzig University.

We plan workshops for career development in a variety of skill areas and in this way support the career paths of both our doctoral researchers and postdocs for careers in and outside academia. Through the Leibniz Programme, we promote interdisciplinary and international exchange between researchers at different levels of qualification and experience.

In addition to the workshop programme of the Competence School, our services include a writing lab, German courses for different language levels as well as

travel allowances for active participation in (inter)national conferences and meetings. We support the supervision process in the context of the doctorate with, for instance, a [template supervision agreement](#), a [handout with recommendations for good supervision in the doctorate](#) (will soon be available in English) and an [e-learning course on good scientific practice](#).

You can find out all about our services and offers [on our website](#). You can also subscribe to [our monthly newsletter](#). It will keep you informed about current calls for proposals, events and offers for doctoral researchers and early postdocs. You can also follow us on social media: [Twitter](#), [Facebook](#), and [Instagram](#)!

You can also listen to and subscribe to our podcast „[Wie wir promovieren](#)“ (“How we do our doctorate”). In each episode, two doctoral researchers talk about a topic they are dealing with during their doctorate.

WRITING LAB

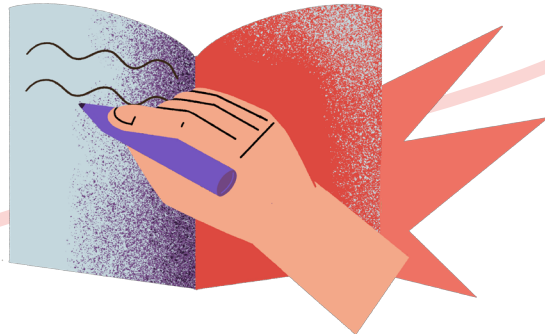
You've collected all of the data and now it's time to get started with writing your dissertation? But despite months of work at the library, are you somehow just not making progress with the chapter you're on? All doctoral researchers have to write sooner or later – and they have to write a lot. You will encounter an endless number of challenges, but there are just as many techniques and hacks to solve them.

We offer various free modules in [our writing lab](#) to support you in your writing process. Under the current circumstances, the modules of the writing lab vary; we are constantly adapting them to the current situation.

As of October 2021, the following modules are available:

- Online Writing Sprints: Work on your own texts in English, peer exchange and feedback from a writing coach.

- Cowriting Space at Villa Tillmanns: A quiet place to work, taking collective breaks. The co-writing space is set up in accordance with the currently valid hygiene concept of Leipzig University.
- Individual writing consultations (on request): Detailed, individual feedback and focus on specific challenges in your writing process.



GERMAN COURSES

We offer international doctoral researchers and postdocs [the opportunity to learn German and increase their language proficiency](#). In partnership with interDaf e.V. at the Herder-Institut at Leipzig University, we organise courses at several language levels. If you are interested, you take a placement test at the beginning of each course and are then assigned to one of the five language levels. In the course, participants can then register directly for the next level. Currently, all courses take place online. The Research Academy covers the costs of the German courses; participants have to contribute €55 each.

The courses for all language levels take place in three rounds per year:

- **October – December** (Registration in September)
- **January – March** (Registration in December)
- **April – July** (Registration in March)



SKILLS DEVELOPMENT AT THE RESEARCH ACADEMY

WORKSHOP PROGRAMME FOR DOCTORAL RESEARCHERS AND EARLY POSTDOCS AT LEIPZIG UNIVERSITY

You can find all current workshops, information on registration as well as language, venue, earning ECTS credits, our waiting list and childcare [on our website](#).

Our free workshops are aimed at all doctoral researchers and early postdocs at Leipzig University and cooperating research institutions. We offer the opportunity to strengthen your competence profile as an early career researcher in a differentiated and individual way and to actively shape the next steps on your career path – regardless of whether you are aiming for a career in or outside academia. To make it easier for you to choose the right workshop, the programme of the Competence School is divided into four categories: Research & Integrity, Career Development, Leadership & Management and Communication & Creativity.



RESEARCH & INTEGRITY

Research & Integrity is at the core of our commitment to skills development. We want to offer research-related workshops that equip early career researchers with the particular skills they need to work in academia, along with their subject-specific expertise. On the one hand, the focus in this category is on research-related topics such as acquiring third-party funding, publishing and various statistics and programming software. On the other hand, you can choose workshops that focus on research integrity, good scientific practice and open science.

Workshops (in English) in this category 2021/22

- Data Science with 'R'
- Improved Reading
- Good Scientific Practice
- Academic Writing
- Grant Writing

eLearning course “Good Academic Practice during Doctoral Studies”

How do you document research results? How do you cite correctly? How do you deal with image sources? Answers to questions about working correctly are provided in the eLearning course “Good Academic Practice During Doctoral Studies” in German and English.

The tool was designed by the Goethe Research Academy for Early Career Researchers of Goethe University Frankfurt and adapted for doctoral researchers at Leipzig University. Five modules are available, containing comprehensive information, tests to check the knowledge gained as well as supplementary information materials. Completing all modules takes about 60 minutes. You can interrupt the course at any time, recover your previous progress or repeat modules. At the end, you will have the possibility to receive a certificate.

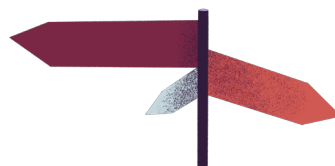
You can obtain a licence to take the eLearning course from Juliane Rein [via email](#).

CAREER DEVELOPMENT

Developing a profile and recognising your own strengths and weaknesses can help you to identify and actively implement concrete steps towards the career you want. Our offerings are designed to help you find your career path, no matter if you are pursuing a career in or outside of academia or if you are still undecided. To support your individual decision regarding further career planning, we offer you both courses of qualification and orientation. In particular, the design of career workshops is close to our hearts. We cover all stages of career development with our workshops (career planning with location analysis, decision-making and application training) and focus on both academic and non-academic careers

Workshops (in English) in this category 2021/22

- How to find your Job in the non-academic Labour Market
- How to Become a Professor
- Funding Options for Postdoc Positions



COMMUNICATION & CREATIVITY

Successfully communicating with experts in your field and the wider public and effectively presenting and publishing your own work are among the key skills required for a successful career in your field. Our offerings in this skill area are also designed to help you stimulate your creative processes, work in an interdisciplinary manner and improve your productivity.

Workshops (in English) in this category 2021/22

- Designing Effective Academic Posters
- Design Thinking

LEADERSHIP & MANAGEMENT

The demands of a (scientific) career go hand in hand with increasing (scientific) independence. On the one hand, you will learn the organisational skills required for this, as well as a structured approach and effective project and time management „on the job“; on the other hand, our workshops offer you the opportunity to further improve yourself beyond your scientific expertise. This applies to both doctoral researchers and early postdocs. In addition to management, leadership is considered an important competence that plays an important role for a successful career in various professional fields after the doctorate – in our workshops you will learn more about strategies and instruments to coordinate and lead teams or research groups.



Workshops (in English) in this category 2021/22

- Peer Coaching Postdocs
- Conflict Management for Early Career Researchers

PUBLISHING CREDITS & CONTACT

V.i.S.d.P.
Dr. Kornelia Ehrlich (Managing Director
of the Research Academy Leipzig)

Editors
Dr. Kornelia Ehrlich, Juliane Rein

Layout/Typesetting
Josephine Petzold, Sophia Lehmann

Illustration
Sophia Lehmann

Research Academy Leipzig
Wächterstraße 30
04107 Leipzig

- ✉ ral@uni-leipzig.de
- 📞 [RAleipzig](#)
- 🌐 [raleipzig](#)
- 📍 [ResearchAcademyLeipzig](#)



This project is co-financed by tax funds on the basis of the budget passed by the members of the Saxon State Parliament.